



LIVING AND WORKING IN WILMINGTON, N.C.

# WELCOME TO WILMINGTON AND WILMINGTON HEALTH



Fulfilling, challenging work. A dynamic city, loaded with activities and places to relax. When you choose to join Wilmington Health, you gain more than a great place to work. You find an incredible place to live.

**TRUE**  
*Care*

*I'm so pleased that you are considering a career with Wilmington Health. Our hope is that those who join us share our vision to become the most trusted partner in healthcare. The work we do is meant to transform the industry's delivery system, and we can do that through collaboration and innovation.*

*That means keeping a high standard of quality by reducing cost and improving the patient experience. We work according to strategic pillars, but behind those pillars is our sense of community and improving the experience for all.*

*Wilmington has so much to offer — and Wilmington Health is a proud part of that. We have a unique team serving a wonderful community, and we're happy to be in it. We'd love for you to join us and bring your gifts to the Cape Fear region.*

*With warmest regards,*

*Jeff James*  
**CEO, Wilmington Health**



# WHY CHOOSE WILMINGTON HEALTH?

It's tough to top coastal life in the Carolinas. Wilmington is in one of the premier places to live in the Southeast, and you're joining more than 270 providers in an esteemed multi-specialty group practice.

Wilmington Health serves **more than half a million** residents in the Wilmington area.

Our care extends to nearby Jacksonville, with primary care outpatient facilities. Wilmington Health operates to meet three primary objectives in everything we do:



Providing high-quality healthcare



Improving the patient experience



Reducing costs

[DISCOVER MORE](#)

## WILMINGTON HEALTH ASPIRES TO BE THE MOST TRUSTED PROVIDER IN HEALTHCARE.

Facilities, technology and capital investments are essential. But, the most important element is our providers. Join a team that shares a commitment to making the patient experience special.

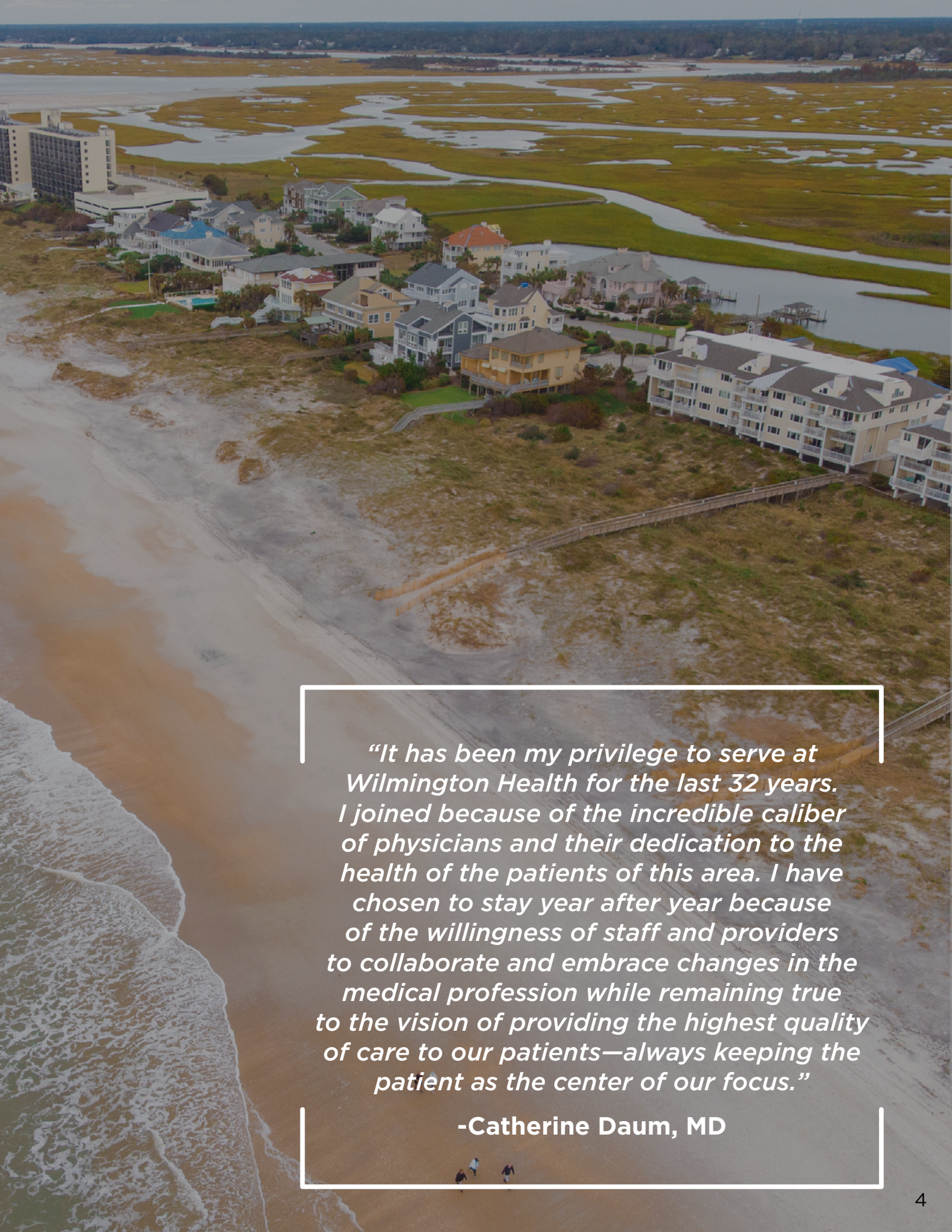
## PROVIDING THE BEST IN HEALTHCARE TODAY

Working with Wilmington Health gives you advantages. Some of those come into play outside of work. Along with an edge in economics, marketing, and management, providers have flexibility. That's a vital aspect of providing the best in healthcare today.

We outfit our facilities with the latest technological tools and state-of-the-art diagnostic equipment. And providers receive a [comprehensive benefits package](#) that sets Wilmington Health apart.

Wilmington Health offers positions with flexibility in scheduling and job sharing. Your perfect opportunity could be here with us.

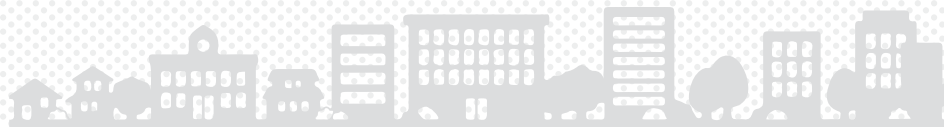


An aerial photograph of a coastal town. In the foreground, a sandy beach meets the ocean with gentle waves. A wooden boardwalk runs along the shoreline. Behind the beach is a cluster of houses and a large, multi-story building. The background features a vast marshy area with winding waterways and distant trees.

*“It has been my privilege to serve at Wilmington Health for the last 32 years. I joined because of the incredible caliber of physicians and their dedication to the health of the patients of this area. I have chosen to stay year after year because of the willingness of staff and providers to collaborate and embrace changes in the medical profession while remaining true to the vision of providing the highest quality of care to our patients—always keeping the patient as the center of our focus.”*

**-Catherine Daum, MD**

# REAL ESTATE



Wilmington housing expenses are 19% below the national average, according to payscale.com. From seaside bungalows to cottages in the historic district, Wilmington real estate is an array of incredible living spaces.



## MIDTOWN

The fast-growing Midtown neighborhood (aka “The Pointe”) offers popular shops, talk-of-the-town restaurants and a healthy arts scene (complete with an art museum and a movie theater), all within easy reach of the heart of the city and a range of well-established neighborhoods, gated communities, apartments and condos.



## HISTORIC DOWNTOWN

Living in or near Downtown offers the choice of modern, luxury apartments, as well as single-family homes within walking distance of all the best downtown has to offer, including: a beautiful riverwalk, great restaurants for both singles and families, an active nightlife, convention and meeting spaces, museums, and cultural facilities.



## WRIGHTSVILLE BEACH

A colorful, five-mile barrier island hosts the ultimate in Southern coastal life. Wrightsville Beach strives to preserve its immaculate natural resources. This beach resort town is home to The Carolina Yacht Club, founded in 1853.



## HAMPSTEAD

Located just 20 minutes from the heart of downtown Wilmington, the town of Hampstead sits within easy reach of the beach and is widely recognized as one of North Carolina’s best places to live.

Boasting highly rated schools and a suburban/rural neighborhood mix, it often attracts retirees and home buyers looking to raise families.



## LANDFALL

Forbes magazine bestowed the Best Address designation on this mature golf community. On the Intracoastal Waterway and Howe Creek, it has 4.5 miles of waterfront properties. Landfall has gained national acclaim as a premier community in which to live.



## KURE BEACH

Kure (pronounced Cure-ee) Beach has abundant beach access with free parking. Or you can take advantage of the ample free parking downtown and be within walking distance of great restaurants, boutique hotels, and fun shopping. Also be sure to stroll along the boardwalk, and check out the Kure Beach Fishing Pier—the oldest pier on the East Coast.



## MAYFAIRE

Found minutes from Wrightsville Beach and adjacent to Landfall and its golf courses, Mayfaire’s innovative mix of community and retail conveys a lively downtown feel. It’s anchored by an entertainment district featuring 90-plus shops and restaurants, and the luxury homes, townhomes and condos in the surrounding neighborhoods are perfect for those seeking an active lifestyle.



## JACKSONVILLE

Home to U.S. Marine Corps Base Camp Lejeune, Jacksonville is near the coast and Croatan National Forest. According to Zillow.com, homeowners and renters are about 50/50 here. Most buildings are single detached homes, but there are townhouses on the market, too.




## LELAND

As one of the fastest-growing areas in southeastern North Carolina, Leland offers many of the modern amenities of a larger metropolitan area, while maintaining the quaint charm and Southern hospitality on which the town was founded. It’s also one of the nation’s top spots to play pickleball, gaining national recognition for its many courts and active community of players.

## THERE ARE GREAT SCHOOLS HERE

Serving more than 26,000 students, New Hanover County School system is the second largest employer in the county. With schools pre-K to eight area high schools, NHCS fosters high-quality education and lifelong learning. GreatSchools.org designates several primary schools as 9s on a 10-point scale. New Hanover County is also home to more than 25 private schools serving preschool through grade 12.



*“When assessing different medical practice offers, WH stood out among the rest in three distinct ways. WH provides an efficient private practice that still allows the physicians to remain in the driver’s seat for patient-centered care. Also, the concentration of high-caliber physicians who are experts in their field is matched by few. Finally, the ability to practice medicine in a serene yet cultivating coastal city was tough to pass up.”*

**-Claude Jarrett, MD**

# THE PORT CITY LIFESTYLE

Live in a place where others vacation

Much of Wilmington's allure comes from its contrasts.

## LOCAL LIFESTYLE — BEACHES AND OUTDOOR RECREATION

Life in the Cape Fear region includes so many chances to unplug and enjoy.

Coastal life is beautiful, with pristine sands, lavish marshes, and sand dunes. Locals and visitors love our area beaches:



### CAROLINA AND KURE BEACHES

Carolina Beach is fishermen's paradise and there are 7 miles of hiking trails to explore. At Kure Beach, visitors love the abundant and free parking and its expansive beauty. You can also take a walk or fish on the historic Kure Beach Pier.

[LEARN MORE](#)



### MASONBORO ISLAND RESERVE

Reachable only by boat, ferry, kayak or canoe, Masonboro Island Reserve is the longest undisturbed barrier island ecosystem at 8.4 miles long. The island shows pristine examples of barrier island, salt marsh, and tidal creek ecosystems.

[LEARN MORE](#)



### WRIGHTSVILLE BEACH

This beach draws visitors in with crystal blue waters and ideal conditions for water sports. Go sailing and surfing, grab dinner on the pier or enjoy shopping in a local boutique.

[LEARN MORE](#)

### WATERSPORTS

Getting out on the water is one of the best parts of coastal life. Wilmington has options for:

**Boating** — [Sea Gate Boating](#)

**Kayaking** — [Wrightsville Beach Kayak Company](#)

**Paddle boarding** — [Wrightsville SUP](#)

**Surfing** — [Aussie Island Surf Shop](#)

### GOLF

A coastal community often is rich in golf courses. From public to private, Wilmington has over 25 public, semi-private and private courses to choose from:

**Public course** — [Wilmington Municipal Golf Course](#)

**Private course** — [Pine Valley Country Club](#)

**Highly-rated favorite** — [Inland Greens Park & Golf Course](#)

### FISHING

Cast a line to pass the time. Anyone older than 16 in North Carolina needs to be licensed:

**Get a license** — [N.C. Wildlife](#)

**Drive-on beaches** — [Fort Fisher](#)

**Fishing charters** — [Feel Good Fishing Charters & Adventures](#)

**Pier fishing** — [Johnnie Mercers Fishing Pier](#)

### BIKING AND TRAILS

Fitness and healthy living is beautiful in the Cape Fear region. Here's where to look for:

**Biking** — [Gary Shell Cross City Trail](#)

**Hiking** — [Bluethenthal Wildflower Preserve](#)

**Both** — [Riverwalk](#)

### PARKS AND GARDENS

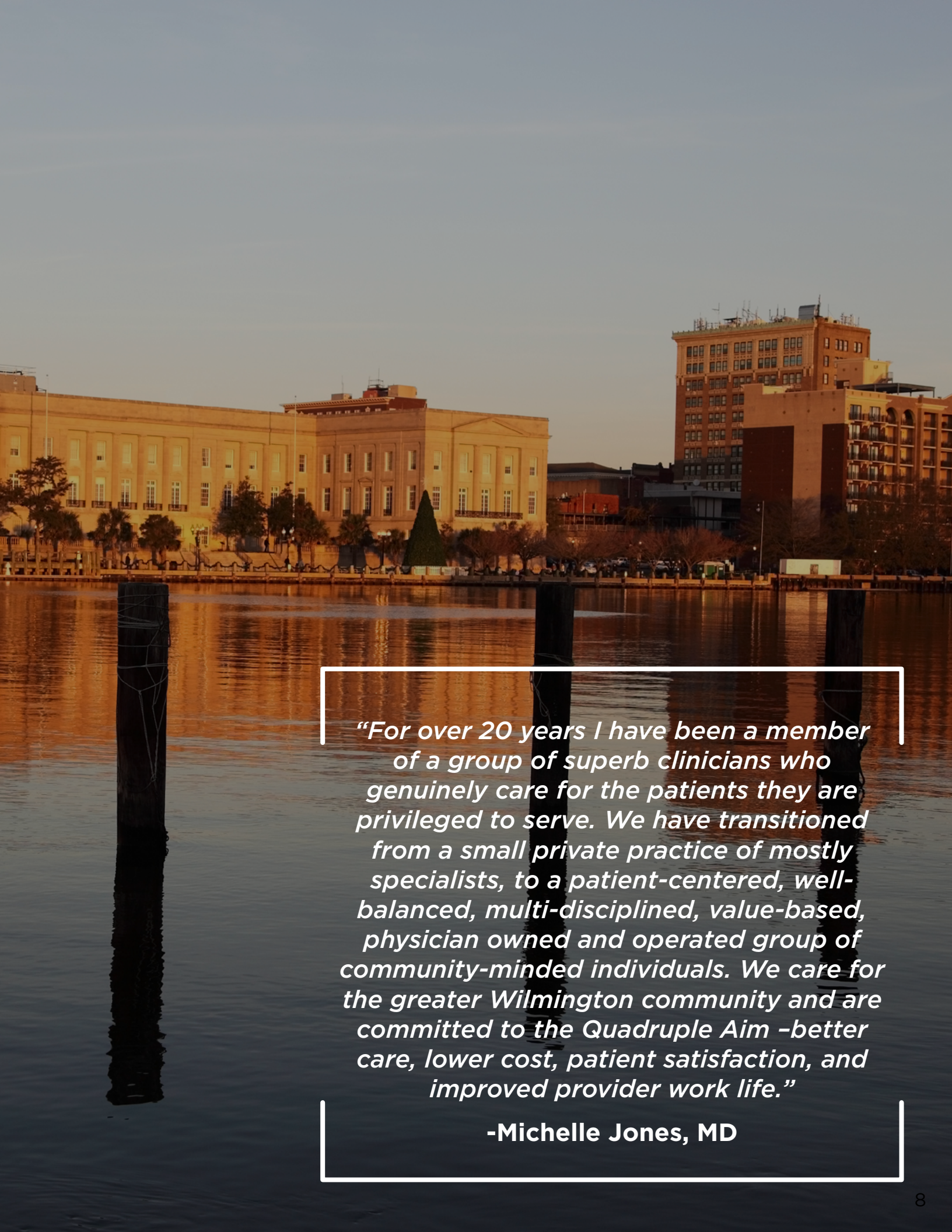
All this beautiful scenery makes for a serene setting during your downtime. Visit one of our enhanced parks or gardens:

**Botanical gardens** — [Airlie Gardens](#)

**Parks** — [Longleaf Park](#), [Wrightsville Beach Park](#)

**Dog park** — [Greenfield Lake](#)





*“For over 20 years I have been a member of a group of superb clinicians who genuinely care for the patients they are privileged to serve. We have transitioned from a small private practice of mostly specialists, to a patient-centered, well-balanced, multi-disciplined, value-based, physician owned and operated group of community-minded individuals. We care for the greater Wilmington community and are committed to the Quadruple Aim -better care, lower cost, patient satisfaction, and improved provider work life.”*

**-Michelle Jones, MD**

# CULTURE IN WILMINGTON

Wilmington is steeped in culture, too, with a keen appreciation of the arts. For more details on the Wilmington art scene, [click here](#).



## CAPE FEAR MUSEUM OF HISTORY AND SCIENCE

Founded in 1898, it's the state's oldest history museum, located in downtown Wilmington. What's not to love about history, especially about this unique coastal community? It hosts exhibits for adults and children, with plenty of interactive learning.

LEARN MORE



## CAMERON ART MUSEUM

Referred to with affection as The Cam, this is a tremendous gift to the area to see local artists' work. A cultural oasis, The Cam brings to light some of the most brilliant contemporary artists. Take in-person or virtual classes there, and see Opera Wilmington perform.

LEARN MORE



## WILMINGTON SHARKS

Enjoy an outing to the ballpark to see the Wilmington Sharks play at Buck Hardee Field at Legion Stadium. Offering fun for the whole family, make sure to catch a game during the summer.

LEARN MORE



## THALIAN HALL CENTER FOR PERFORMING ARTS

It's another significant site for Wilmington history, built in 1858. This theater presents wonderful opportunities for volunteer work. The facility hosts everything from ballet companies to rock & roll to classic movies.

LEARN MORE



## WILSON CENTER PERFORMING ARTS DOWNTOWN

This beautiful modern auditorium hosts pop music, Broadway plays, and classical concerts. With plentiful parking and easy access, it's a popular venue with a full calendar of events. You'll find friendly faces, welcoming smiles, and lots to love at Wilson Center.

LEARN MORE



## UNC WILMINGTON

UNCW is a public research university that enrolls around 18,000 undergraduate, graduate and doctoral students each year. Part of the 17-campus UNC system, UNCW is recognized for its commitment to excellence, student-centered learning experiences, diversity, innovation and community engagement.

LEARN MORE



## BATTLESHIP NORTH CAROLINA

The restored World War II battleship opened to the public in 1961 and offers visitors a chance to explore the 9-level ship with a guided or self-guided tour. Open every day, this National Historic Landmark serves as a memorial honoring the 11,000 North Carolinians of all branches of service who gave their lives in World War II.

LEARN MORE



## WILMINGTON SYMPHONY ORCHESTRA

They've been delighting the Cape Fear Region with classical and pops concerts since 1971. Enjoy a splendid evening of music from the area's most talented musicians. Its Music for Youth programs are renowned.

LEARN MORE



## CHILDREN'S MUSEUM OF WILMINGTON

Bring your child's imagination to life at the Children's Museum. Through magical and playful experiences, pre-school to elementary age kids are encouraged to learn and explore to gain a better understanding of arts, science, math and culture.

LEARN MORE



*"I always knew that I wanted to be part of the Wilmington Health system. I just like the culture here. I like that Jeff James walks around and says hello to you and that they do a lot of volunteer work here. We are all a team and I like that feeling."*

**—Maria Mastoras, NP-C**

# EVEN MORE REASONS

## To move to Wilmington

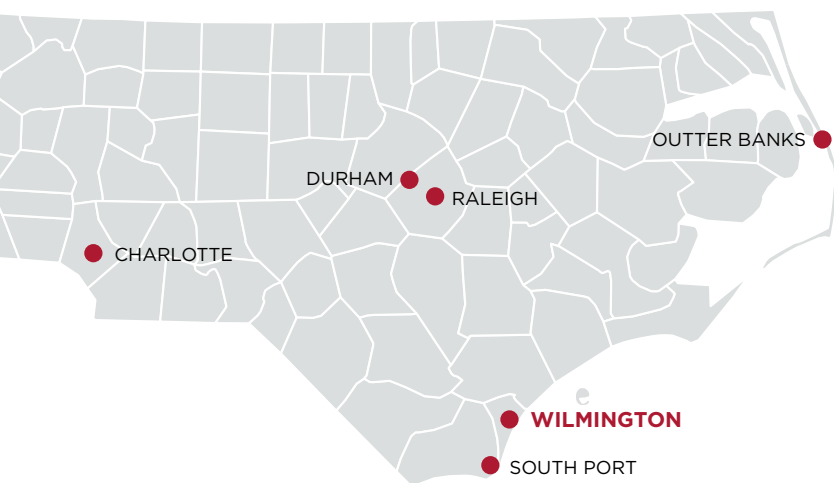
### IT'S DOG FRIENDLY

Pups are welcome on Topsail Beach, as well as several restaurants and coffee houses. Your best friend will love a visit to the beach as much as you do. It's an awesome place for a dog — and a dog's family, too.



### IT'S A BREWERY PARADISE

In breweries, bottle shops, and restaurants, you can sample Wilmington's best brews. The city's craft beer scene is burgeoning, with all beer palates covered. Lift a glass when you entertain friends and family in your new town.

[LEARN MORE](#)

### IT'S CLOSE TO OTHER COOL PLACES

Wilmington is a destination unto itself, but it's also close to other places to visit. You're a weekend or day trip away from awesome places. For sport, for leisure, or for anything in between, Wilmington's in a sweet spot in the Carolinas.

#### CHARLOTTE

3 HOURS, 23 MINUTES | 201 MILES  
The Queen City is North Carolina's biggest town, and growing, with a stellar social scene. You'll find beautiful parks, outdoor venues, and amazing restaurants. It's home to the NFL's Carolina Panthers, NBA's Charlotte Hornets, and minor-league baseball.

#### RALEIGH

1 HOUR, 54 MINUTES | 129 MILES  
Another city on the move, Raleigh has outstanding restaurants, parks, shopping, and more. It has a bustling music landscape and a small-town feel to a bigger city. Raleigh is home to the NHL's Carolina Hurricanes and minor-league baseball.

#### SOUTHPORT

44 MINUTES | 32.2 MILES  
The setting for Nicholas Sparks' romance novels has become a hit with travelers. Convenient to Oak Island and Holden Beach, Southport is a haven for dining and history. It's a great weekend spot for outdoor adventures or a lot of nothing at all.

#### OTHER DRIVABLE DESTINATIONS

MYRTLE BEACH - 77 miles | CHARLESTON - 176 miles | WASHINGTON DC - 364 miles | ATLANTA - 420 miles



**21 LOCATIONS,  
27 SPECIALTIES  
AND OVER 270  
PROVIDERS**

all conveniently located in the  
Wilmington, NC metro area.



To learn more about a career at Wilmington Health, contact

Alysa Bostick

910-520-3818

[abostick@wilmingtonhealth.com](mailto:abostick@wilmingtonhealth.com)

Hunter MacIntyre

910-528-5735

[hcmacintyre@wilmingtonhealth.com](mailto:hcmacintyre@wilmingtonhealth.com)

[WILMINGTONHEALTH.COM/CAREERS](http://WILMINGTONHEALTH.COM/CAREERS)